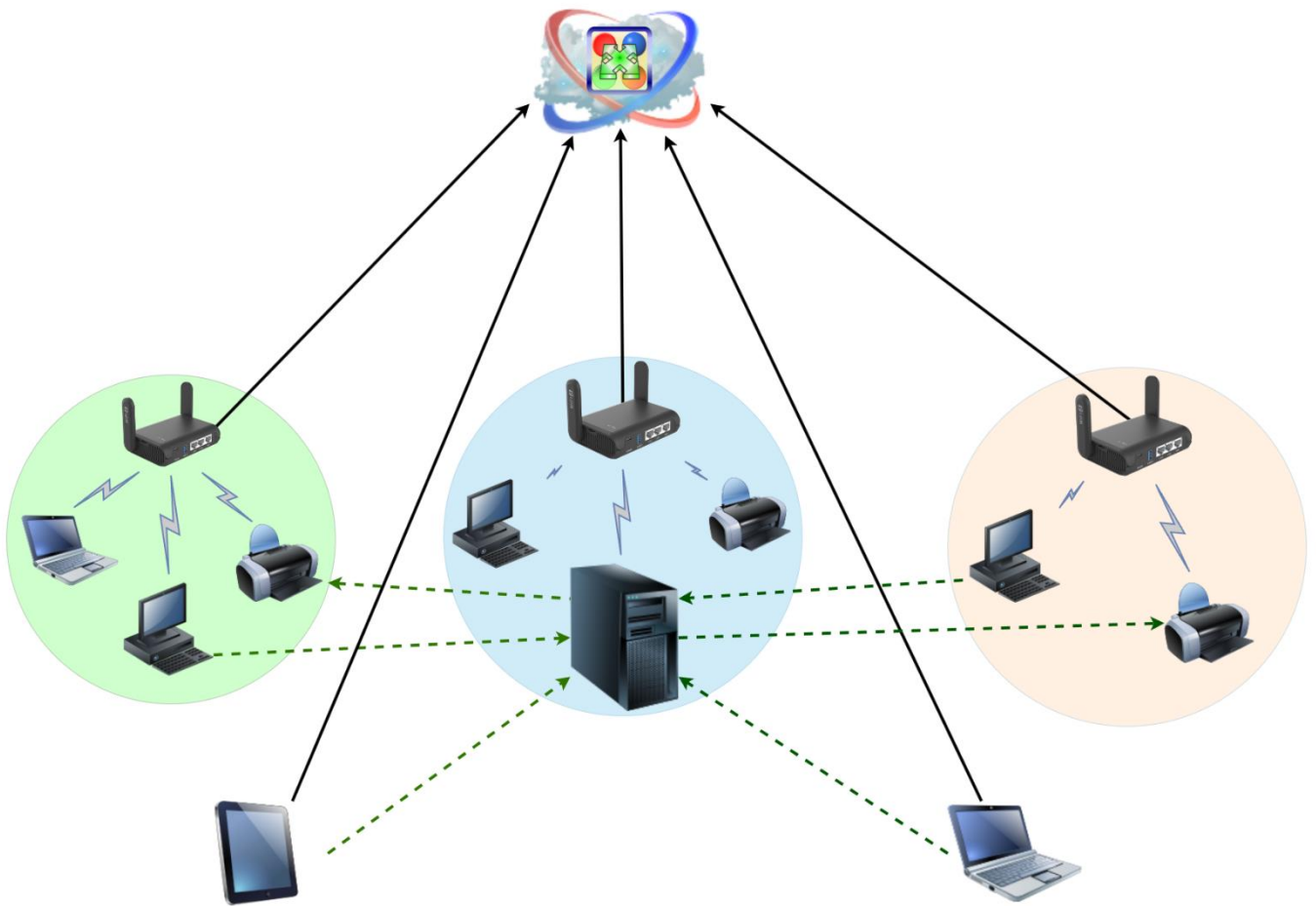


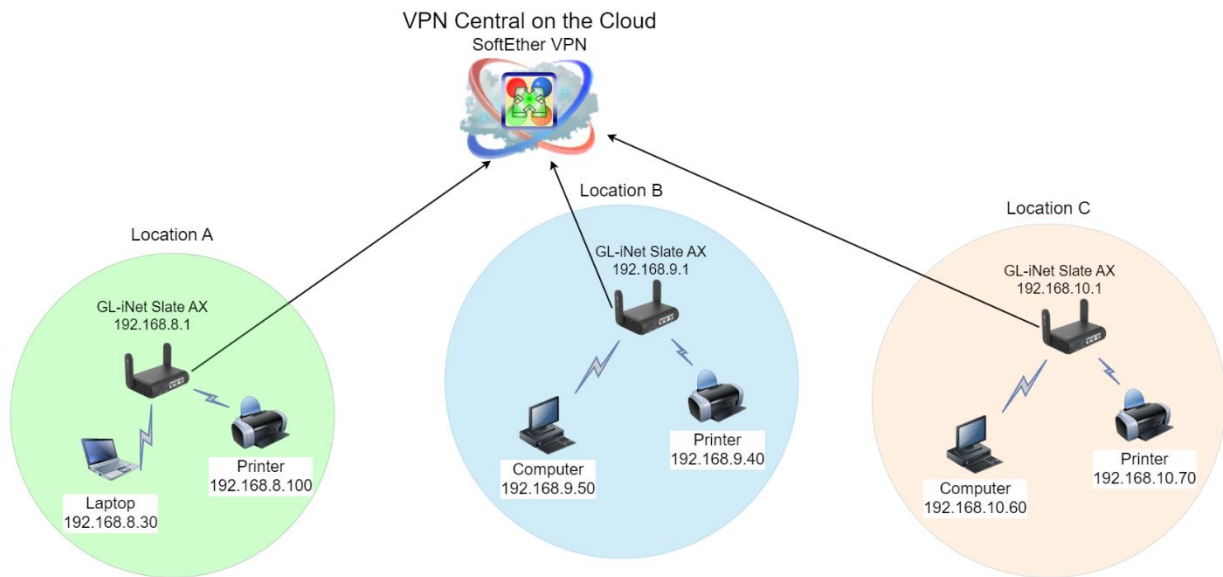
Remote Access and VPN Solutions



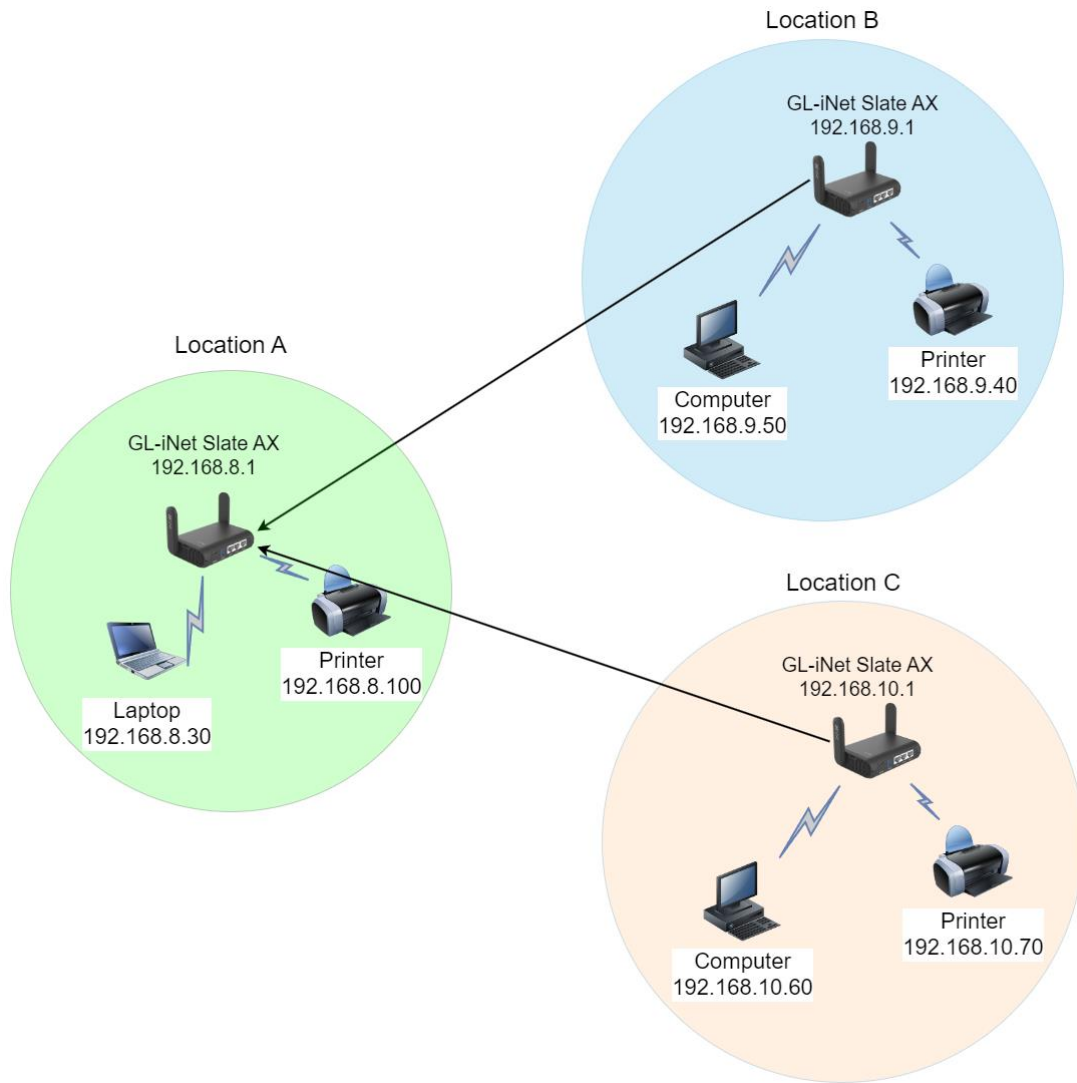
Contents

Remote Access and VPN Solutions.....	1
Site-to-site VPN Solution, using the Cloud.....	3
VPN site-to-site solution using the local infrastructure	4
VPN Solution for Access to the Local Network	5
VPN Solution for Remote Access to computers, with Virtual Network	6
<i>SoftEther VPN Server</i> - the brains of the operation	7
<i>SoftEther VPN Server</i> on a Windows computer	7
<i>SoftEther VPN Server</i> on GL.iNet routers	7
<i>SoftEther VPN Server</i> on Ubuntu Virtual Machine.....	8

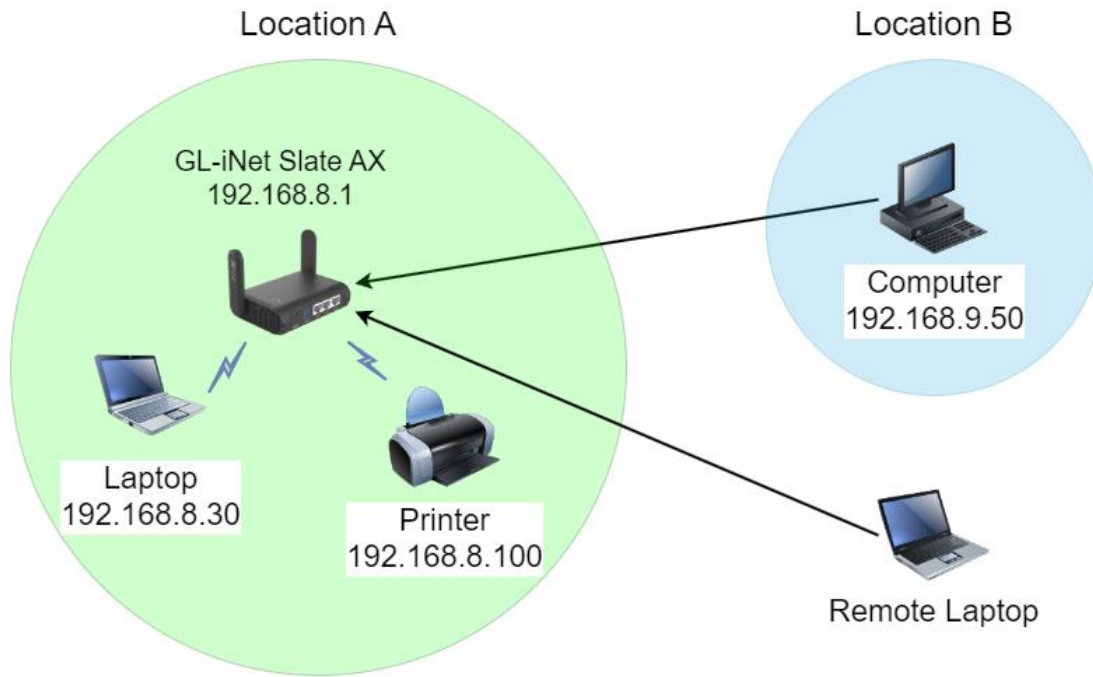
Site-to-site VPN Solution, using the Cloud



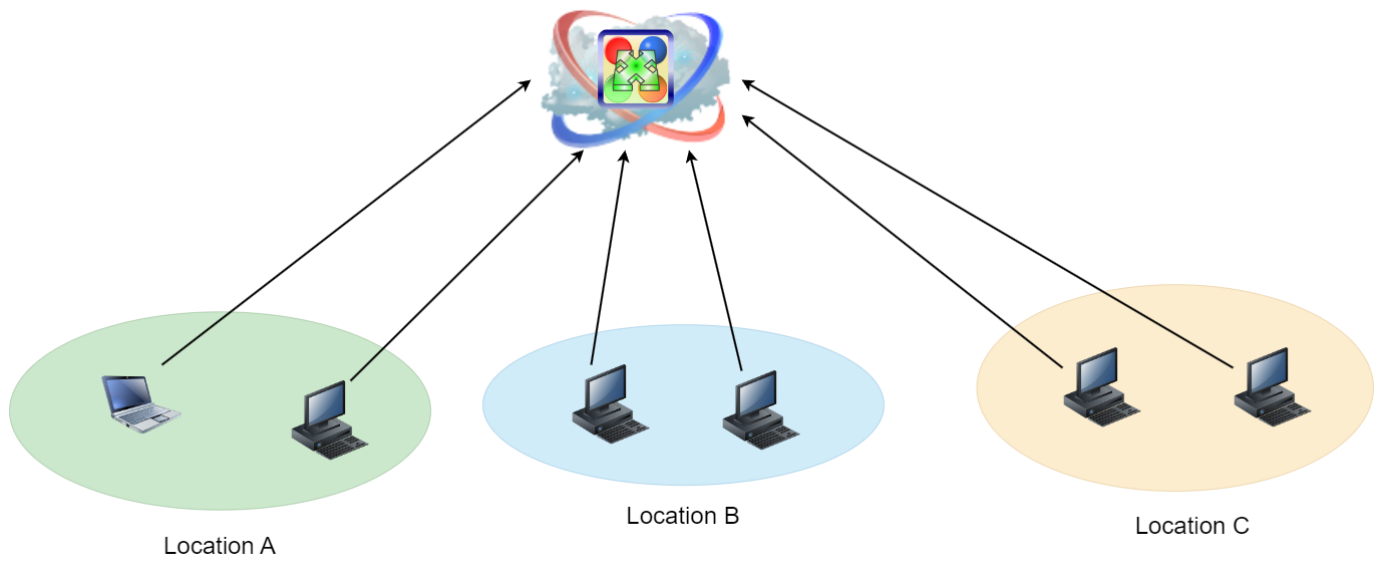
VPN site-to-site solution using the local infrastructure



VPN Solution for Access to the Local Network

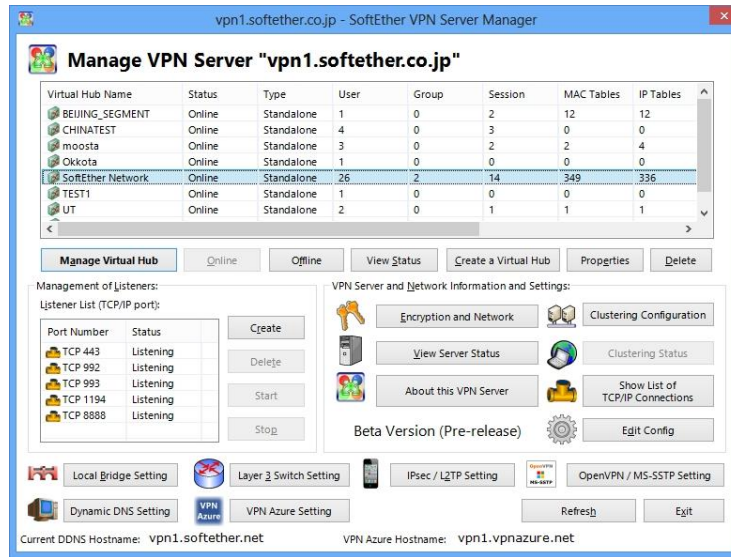


VPN Solution for Remote Access to computers, with Virtual Network



SoftEther VPN Server - the brains of the operation

SoftEther VPN Server on a Windows computer



SoftEther VPN Server on GL.iNet routers



GL.iNet Slate AX



GL.iNet Beryl AX

SoftEther VPN Server on Ubuntu Virtual Machine

The screenshot shows the Hyper-V Manager interface with a virtual machine named 'Ubuntu Server 20.04 - VPN em SERVIDOR' running. The terminal window displays the following output:

```
srv-vpn login: assisttec
Password:
Welcome to Ubuntu 20.04.4 LTS (GNU/Linux 5.4.0-144-generic x86_64)

 * Documentation:  https://help.ubuntu.com
 * Management:    https://landscape.canonical.com
 * Support:       https://ubuntu.com/advantage

System information as of Wed 08 Mar 2023 07:02:13 PM UTC

System load:          0.0
Usage of /:           30.9% of 38.34GB
Memory usage:        67%
Swap usage:          1%
Processes:           136
Users logged in:     0
IPv4 address for br0: 192.168.10.30
IPv6 address for br0: 2001:8a0:d910:df00:215:5dff:fe0a:a02

 * Strictly confined Kubernetes makes edge and IoT secure. Learn how MicroK8s
   Just raised the bar for easy, resilient and secure K8s cluster deployment.

   https://ubuntu.com/engage/secure-kubernetes-at-the-edge

50 updates can be applied immediately.
To see these additional updates run: apt list --upgradable

Last login: Thu May 12 14:52:28 UTC 2022 on tty1
assisttec@srv-vpn:~$
```

The interface also shows a table of virtual machines and details for the selected VM:

Nome	Estado	Utilização da CPU	M
Ubuntu Server 20.04 - VPN	Em execução	0%	10
Windows 10	Em execução	0%	36

Pontos de verificação

Ubuntu Server 20.04 - VPN

- Criado: 18/11/2021 17:47:14
- Versão: 5.0
- Geração: 2
- Notas: Nenhum